

WELSH



INNOVATION FROM THE GROUND UP

For Lease

Beltline Park Office Building
4915 35th Street West
St. Louis Park, Minnesota

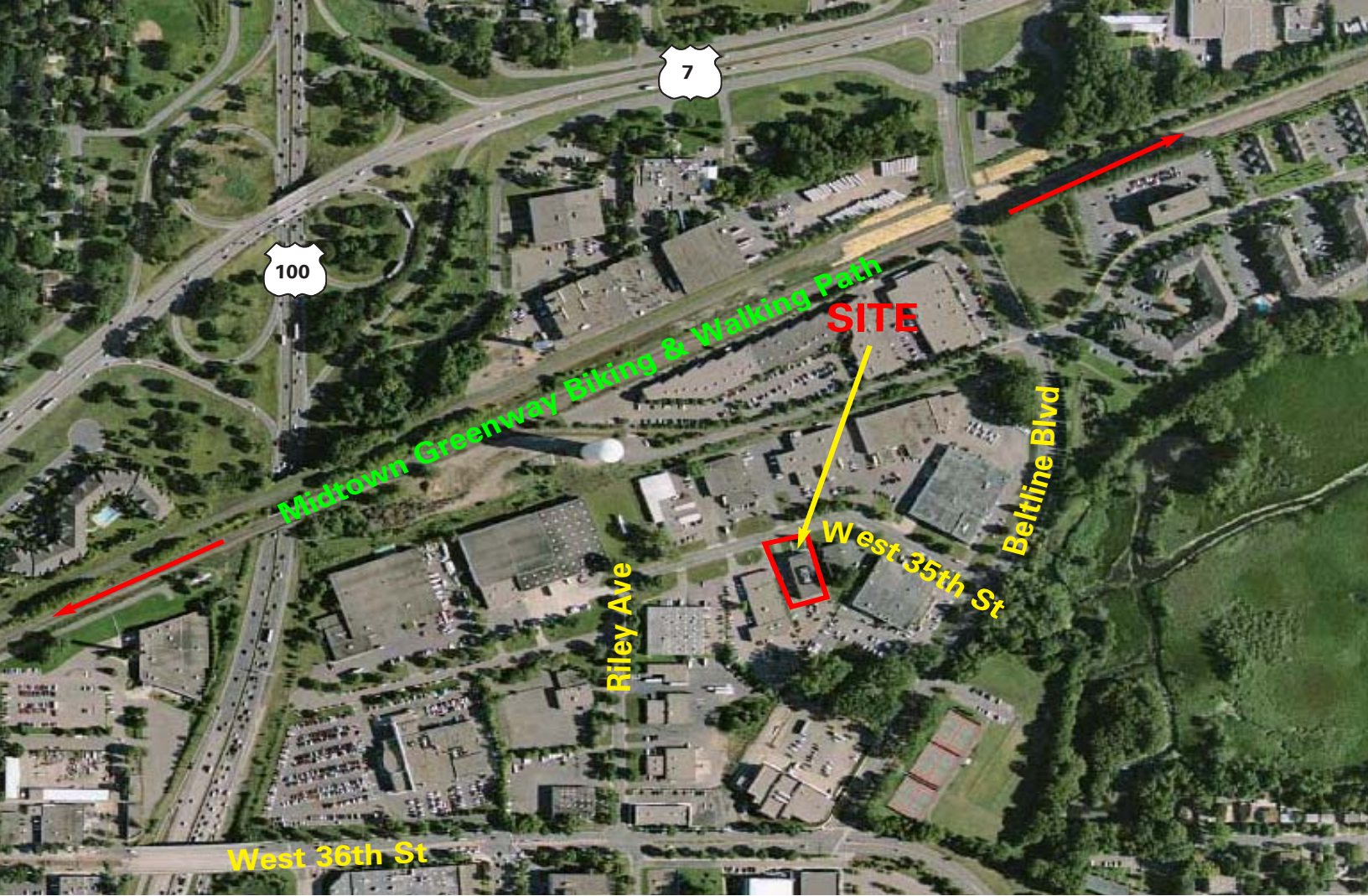
- Great value office space
- Located in the heart of St. Louis Park
- Excellent access to Minneapolis, Hwy 7, Hwy 100 and I-394
- Neighborhood office building with a great glass line and efficient layout
- Good parking



For more information contact:

Nick Leviton
952.897.7843
nleviton@welshco.com

NAIWELSH



For more information contact:

Nick Leviton

952.897.7843

nleviton@welshco.com



Beltline Park Office Building For Lease

Building Address:

4915 35th Street West
St. Louis Park, Minnesota

Nick Leviton

- 952.897.7843
- nleviton@welshco.com

Currently Available:

First Floor Options:

Suite A):

1,980 square feet of office

www.welshco.com

Suite B):

2,200 square feet of office

Suite C):

340 square feet of office

4350 Baker Road, Suite 400

Minnetonka, MN 55343

Tel: 952.897.7700

Fax: 952.842.7700

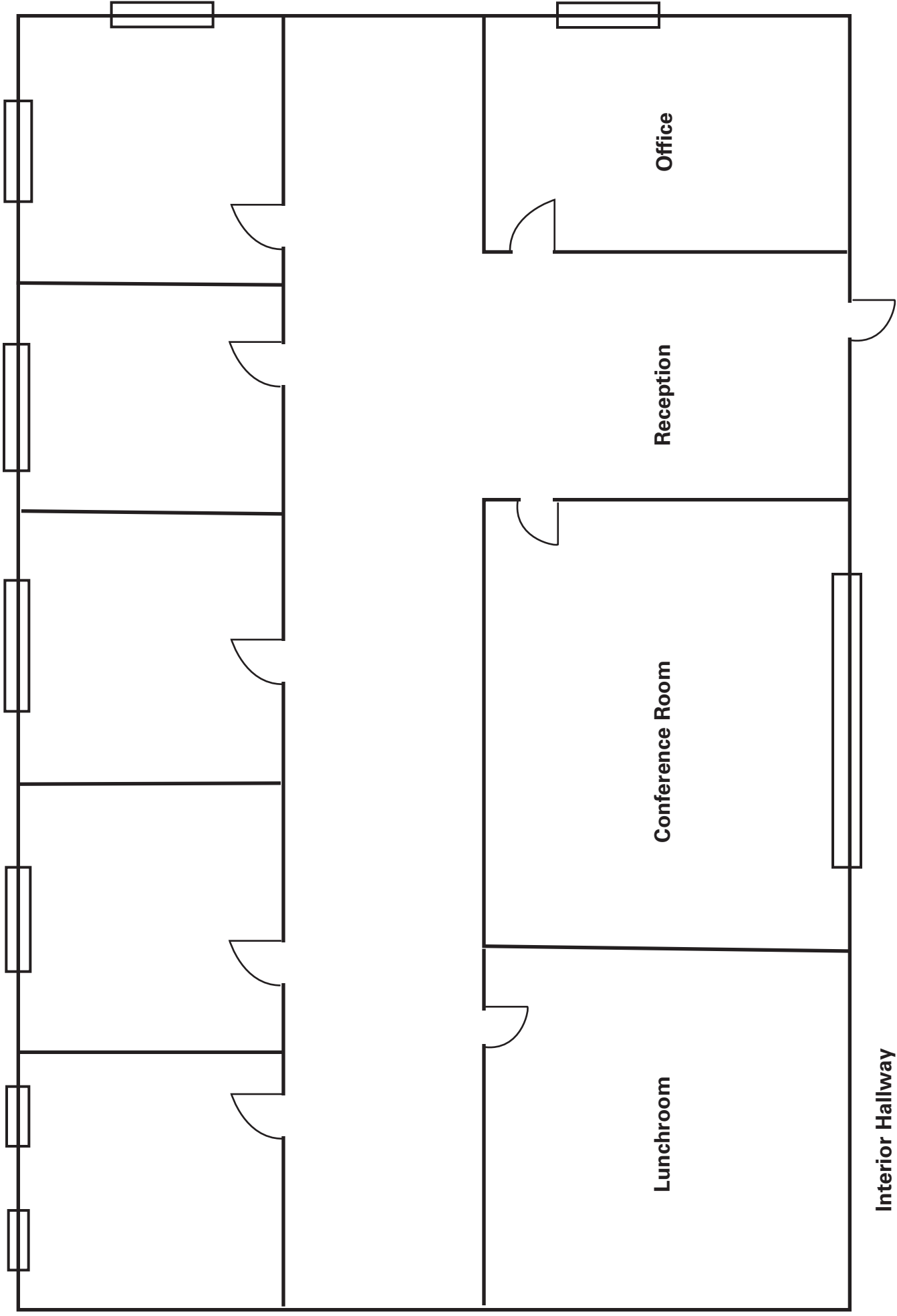
Gross Rental Rates:

\$14.00 psf
Includes common area maintenance,
taxes, utilities and janitorial to the
space.

Amenities:

- Located in the heart of St. Louis Park
- Excellent access to Minneapolis, Hwy 7, Hwy 100 and I-394
- Neighborhood office building with a great glass line and updated finishes
- Good parking
- Both DSL and cable internet service available in the building

Floor Plan - Suite A: 1,980 sq. ft. (not to scale)



Floor Plan - Suite B: 2,200 sq. ft. (not to scale)

