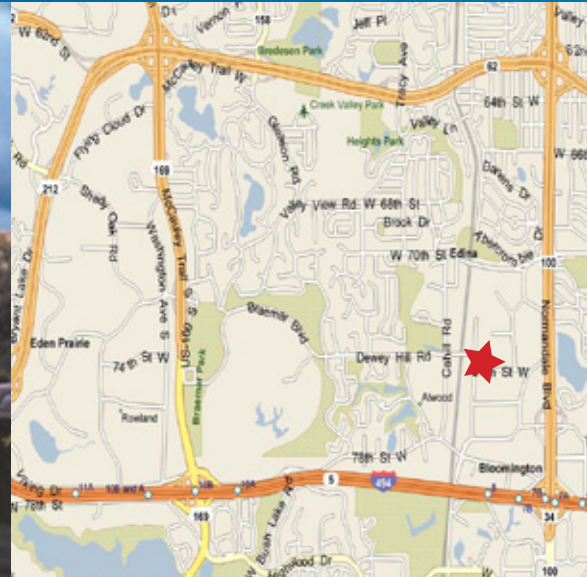


FOR LEASE > OFFICE/WAREHOUSE SPACE



# Kremer Building

7401-7429 BUSH LAKE ROAD, EDINA, MINNESOTA



## Office/Warehouse Space for Lease

55,619 square foot office/warehouse facility available for lease in prime Edina location. Conveniently located near Hwy 100, I-494 and Crosstown 62. Close to retail, restaurants and hotels.

## Building Amenities

- > 55,619 square foot office/warehouse facility
- > All office and office/warehouse suites available
- > Ample parking
- > Easy access to Hwy 100, I-494 and Crosstown 62
- > Convenient location close to retail, restaurants, and hotels

## Contact Us

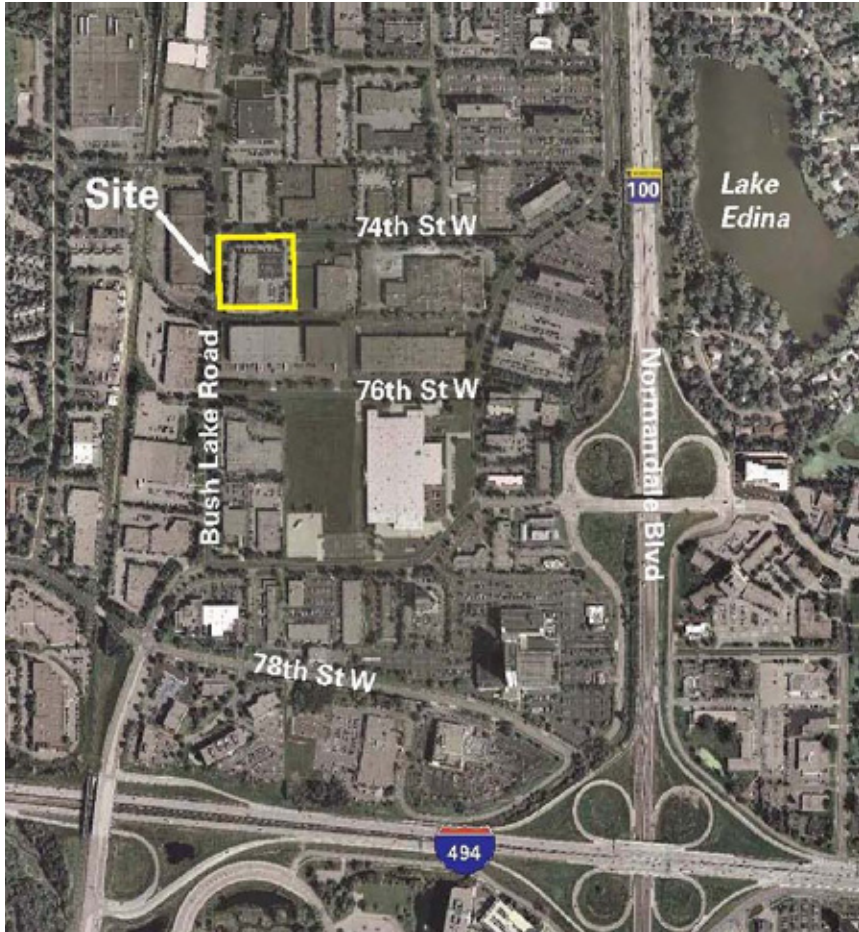
JEFF GIOVANAZZO  
952 897 7878  
MINNEAPOLIS, MN  
[jeff.j@colliers.com](mailto:jeff.j@colliers.com)

JUDD WELLIVER  
952 897 7854  
MINNEAPOLIS, MN  
[judd.welliver@colliers.com](mailto:judd.welliver@colliers.com)

COLLIERS INTERNATIONAL  
4350 Baker Road, Suite 400  
Minnetonka, MN 55343  
[www.colliers.com](http://www.colliers.com)

## Kremer Building > Aerial

---



## Contact Us

---

JEFF GIOVANAZZO  
952 897 7878  
MINNEAPOLIS, MN  
[jeff.j@colliers.com](mailto:jeff.j@colliers.com)

JUDD WELLIVER  
952 897 7854  
MINNEAPOLIS, MN  
[judd.welliver@colliers.com](mailto:judd.welliver@colliers.com)

---

COLLIERS INTERNATIONAL  
4350 Baker Road, Suite 400  
Minnetonka, MN 55343  
[www.colliers.com](http://www.colliers.com)



## PROPERTY FACT SHEET



# Kremer Building

7401-7429 BUSH LAKE ROAD, EDINA, MINNESOTA

### **BUILDING ADDRESS:**

7401-7429 Bush Lake Road  
Edina, Minnesota

### **BUILDING SQUARE FEET:**

55,619 square feet

### **OFFICE CURRENTLY AVAILABLE:**

#### **SUITE 7:**

6,989 square feet of office  
• \$10.00 psf gross

#### **SUITE 18:**

3,339 square feet of office  
• \$10.00 psf gross

#### **SUITE 13:**

1,304 square feet of office  
• \$10.00 psf gross

#### **SUITE 9:**

1,153 square feet of office  
• \$10.00 psf gross

### **INDUSTRIAL CURRENTLY AVAILABLE:**

#### **SUITE 4:**

4,904 square feet total  
1,046 square feet of office  
3,858 square feet of whse  
• One (1) drive-in door  
• \$9.00 psf net office/\$4.50 psf net whse

#### **SUITE 5:**

3,399 square feet total  
1,612 square feet of office  
1,787 square feet of whse  
• One (1) dock door  
• \$9.00 psf net office/\$4.50 psf net whse

### **CEILING HEIGHT:**

12' clear

### **2011 (EST) CAM & REAL ESTATE TAXES:**

\$3.13 psf total



## For Leasing Information, Contact:

JEFF GIOVANAZZO  
952 897 7878  
[jeff.j@colliers.com](mailto:jeff.j@colliers.com)

JUDD WELLIVER  
952 897 7854  
[judd.welliver@colliers.com](mailto:judd.welliver@colliers.com)

COLLIERS INTERNATIONAL  
4350 Baker Road, Suite 400  
Minnetonka, MN 55343

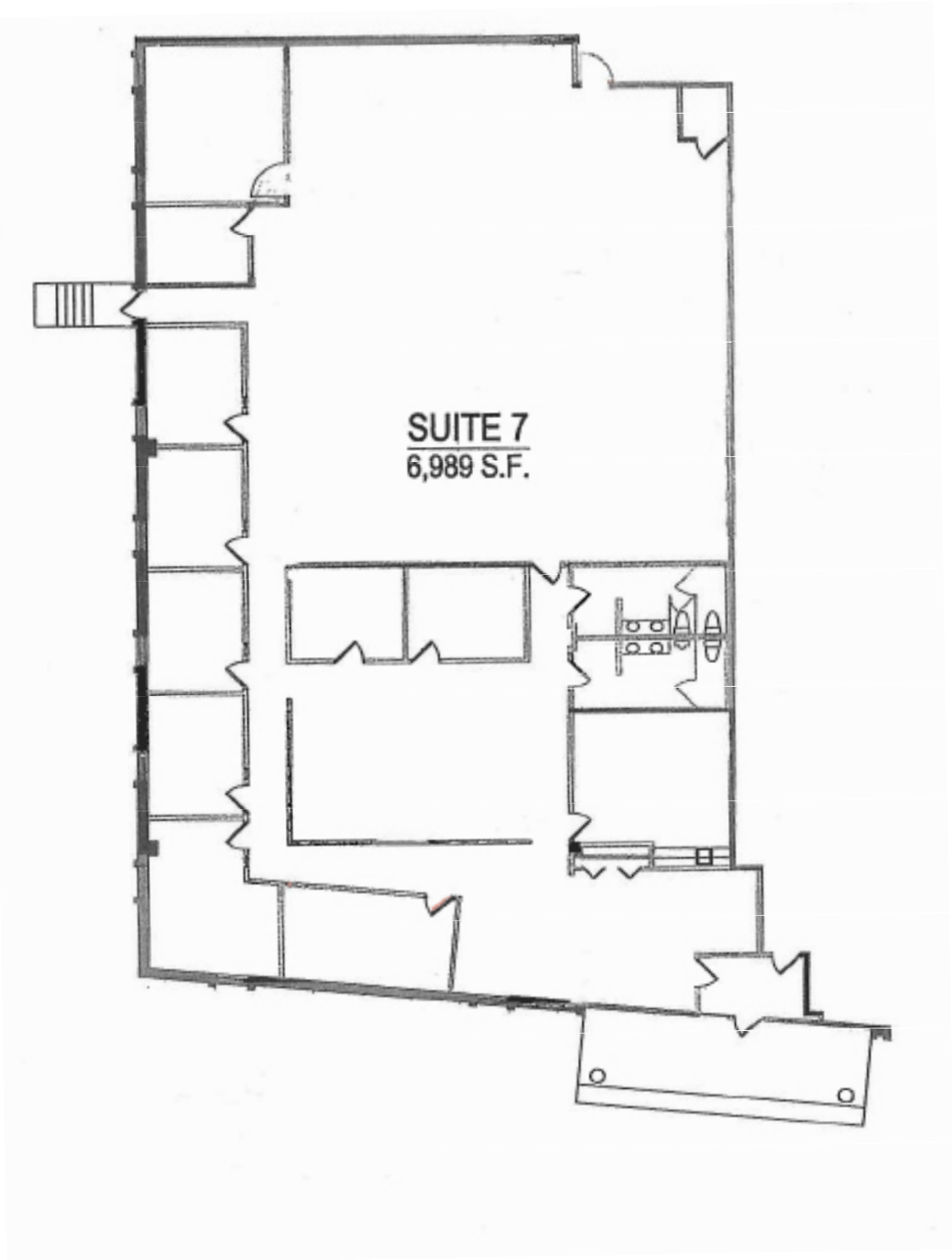
[www.colliers.com](http://www.colliers.com)

# Kremer Building

7401-7429 BUSH LAKE ROAD, EDINA, MN



**SUITE 7**  
6,989 SF



JEFF GIOVANAZZO  
952 897 7878  
[jeff.j@colliers.com](mailto:jeff.j@colliers.com)

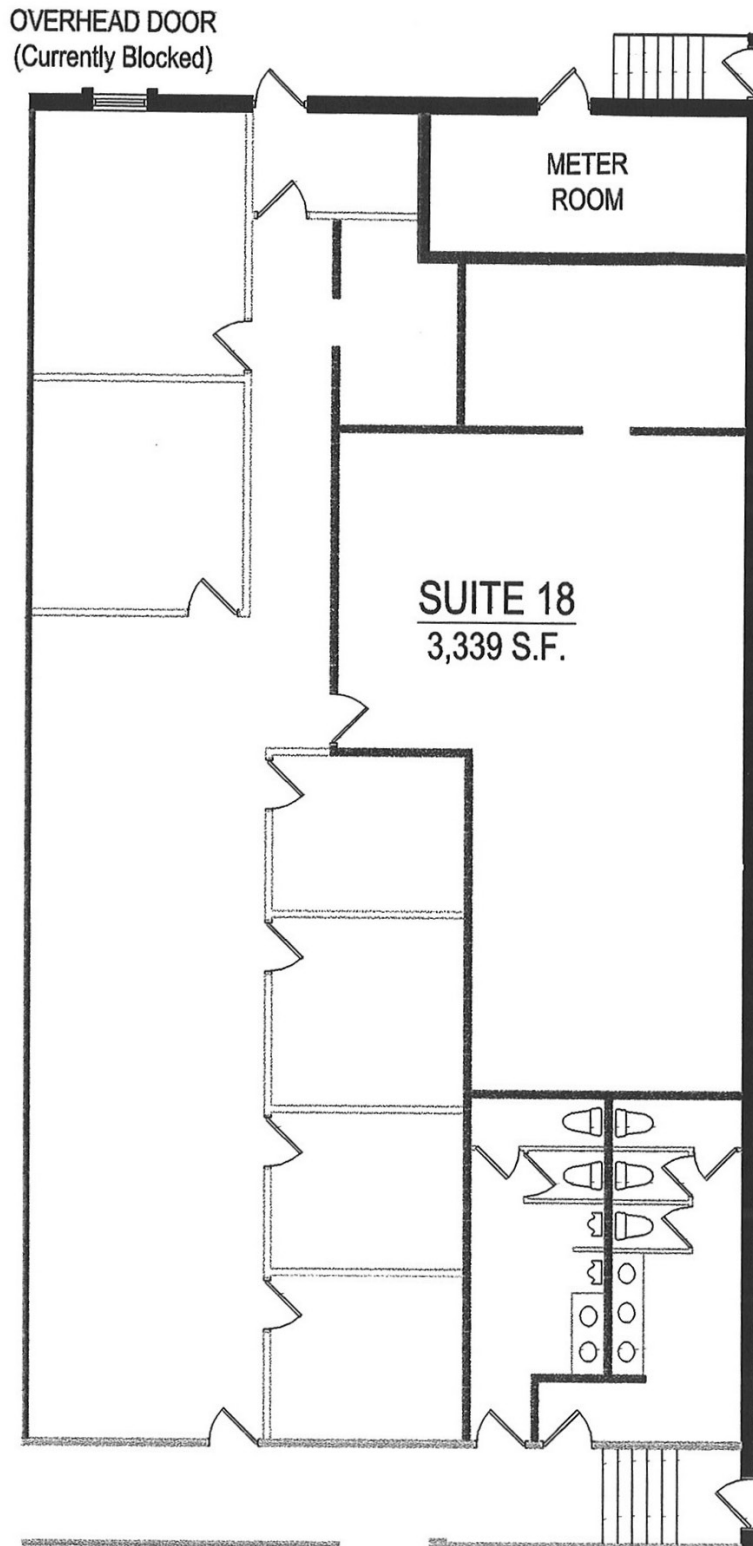
JUDD WELLIVER  
952 897 7854  
[judd.welliver@colliers.com](mailto:judd.welliver@colliers.com)

# Kremer Building

7401-7429 BUSH LAKE ROAD, EDINA, MN



**SUITE 18**  
3,339 SF



JEFF GIOVANAZZO  
952 897 7878  
[jeff.j@colliers.com](mailto:jeff.j@colliers.com)

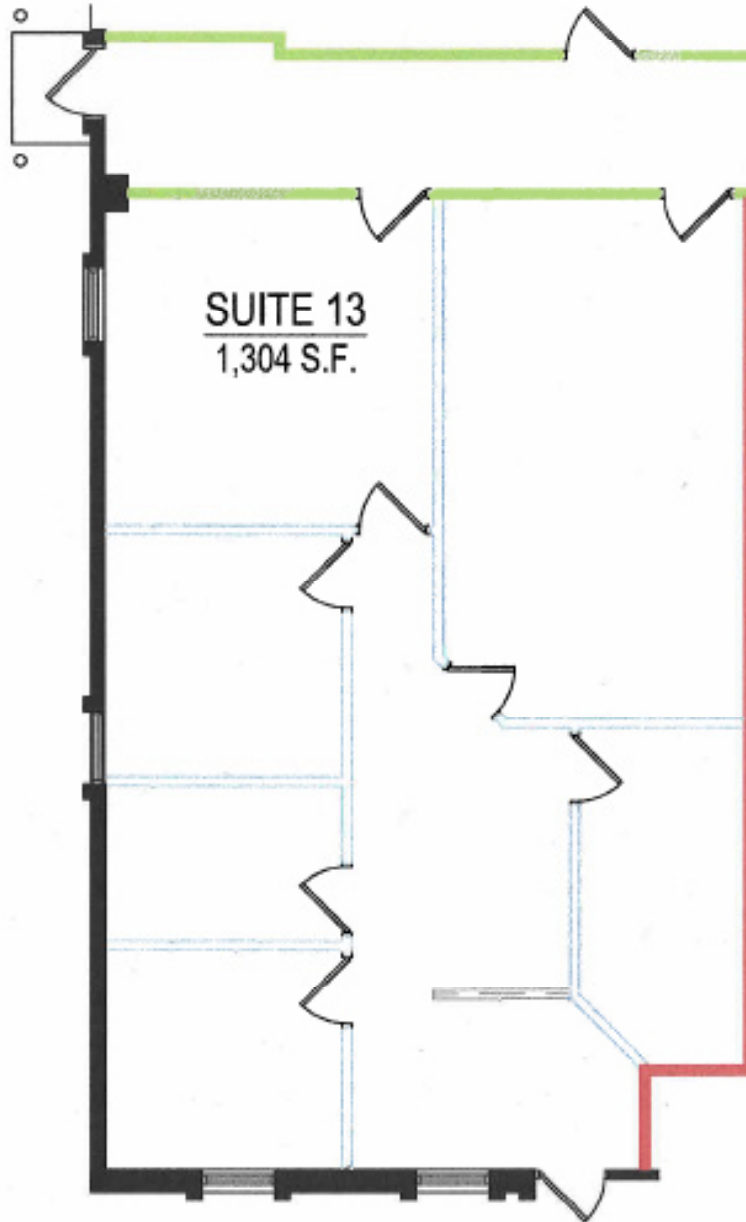
JUDD WELLIVER  
952 897 7854  
[judd.welliver@colliers.com](mailto:judd.welliver@colliers.com)

# Kremer Building

7401-7429 BUSH LAKE ROAD, EDINA, MN



**SUITE 13**  
1,304 SF



JEFF GIOVANAZZO  
952 897 7878  
[jeff.j@colliers.com](mailto:jeff.j@colliers.com)

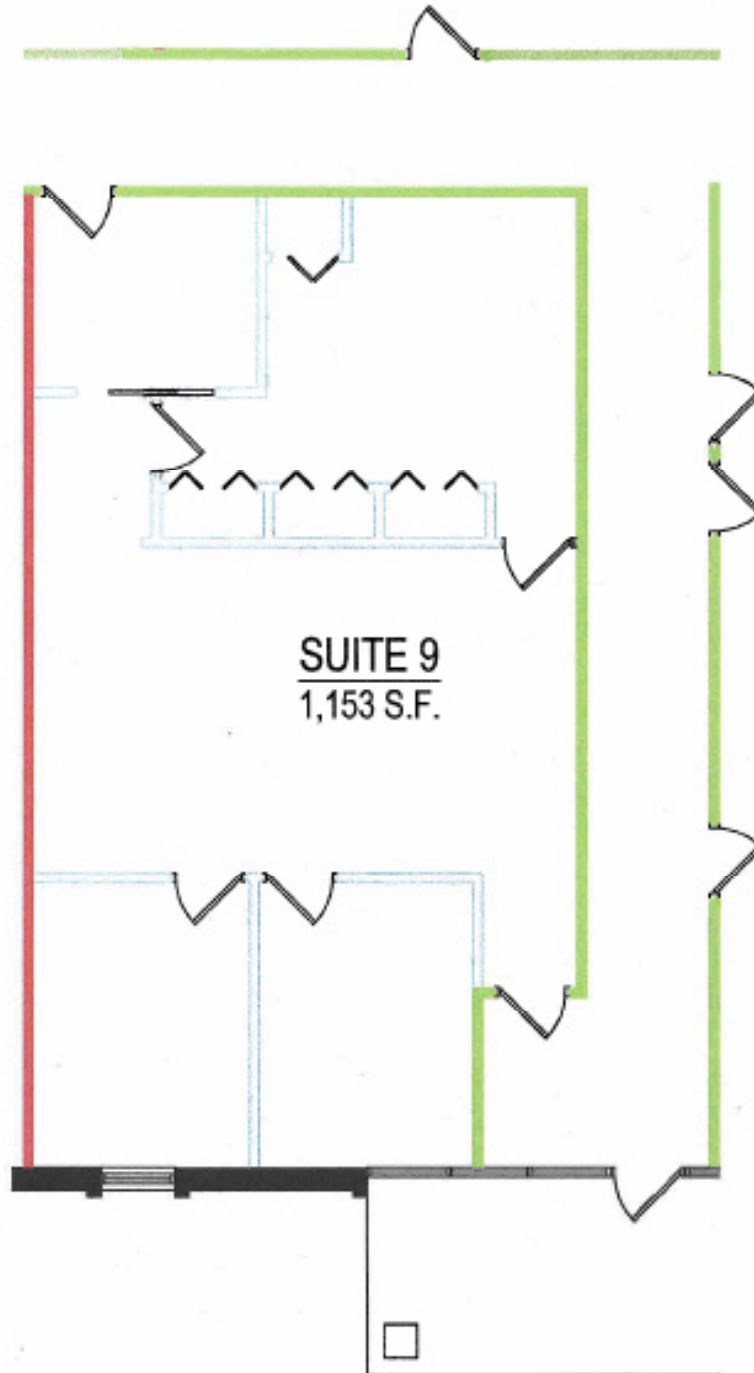
JUDD WELLIVER  
952 897 7854  
[judd.welliver@colliers.com](mailto:judd.welliver@colliers.com)

# Kremer Building

7401-7429 BUSH LAKE ROAD, EDINA, MN



**SUITE 9**  
1,153 SF



JEFF GIOVANAZZO  
952 897 7878  
[jeff.j@colliers.com](mailto:jeff.j@colliers.com)

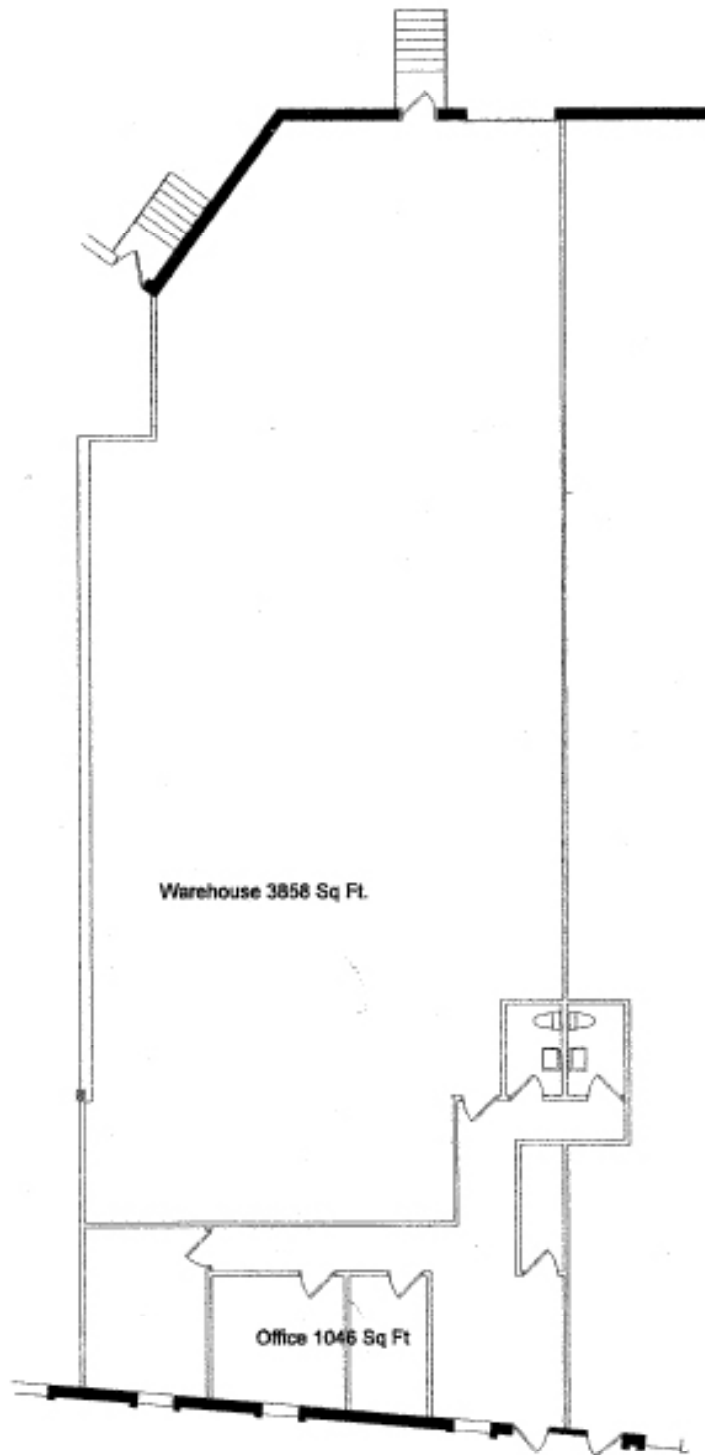
JUDD WELLIVER  
952 897 7854  
[judd.welliver@colliers.com](mailto:judd.welliver@colliers.com)

# Kremer Building

7401-7429 BUSH LAKE ROAD, EDINA, MN



**SUITE 4**  
4,904 SF



JEFF GIOVANAZZO  
952 897 7878  
[jeff.j@colliers.com](mailto:jeff.j@colliers.com)

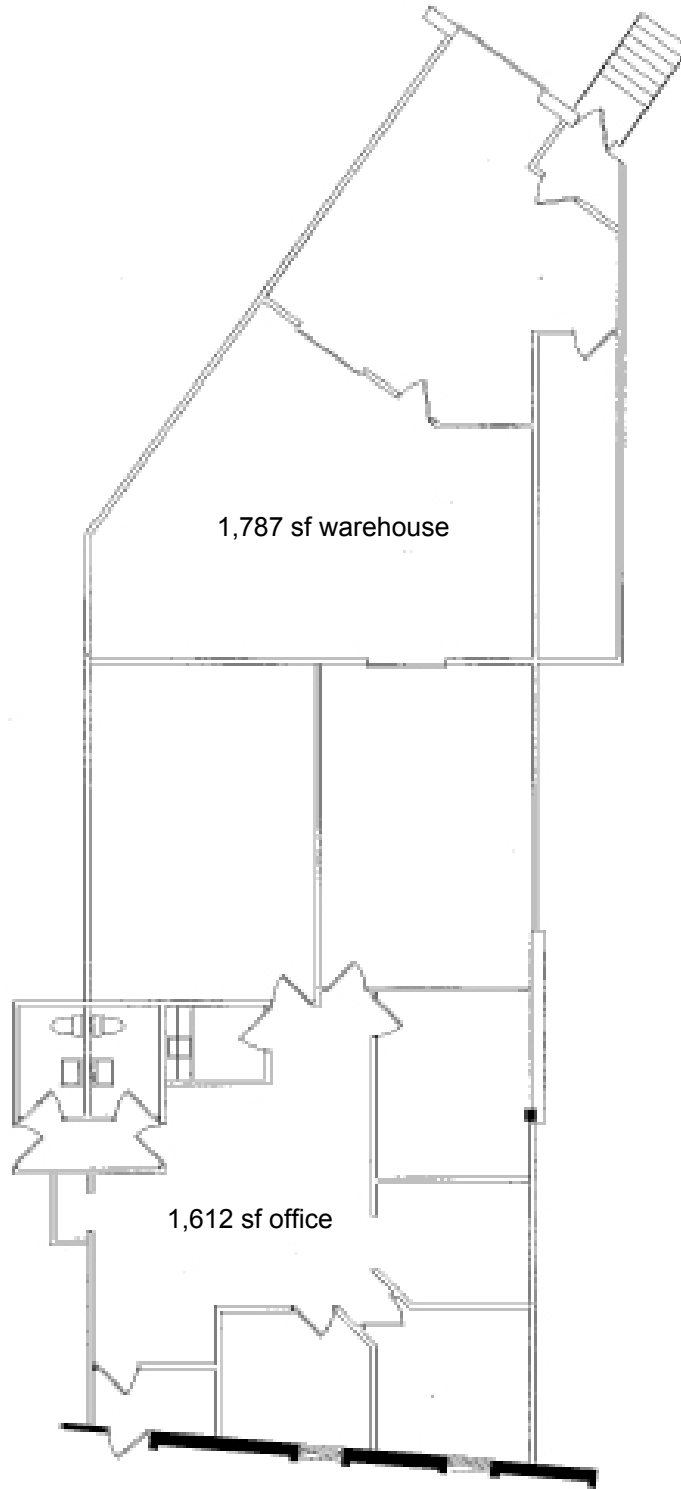
JUDD WELLIVER  
952 897 7854  
[judd.welliver@colliers.com](mailto:judd.welliver@colliers.com)

# Kremer Building

7401-7429 BUSH LAKE ROAD, EDINA, MN



**SUITE 5**  
3,399 SF



JEFF GIOVANAZZO  
952 897 7878  
[jeff.j@colliers.com](mailto:jeff.j@colliers.com)

JUDD WELLIVER  
952 897 7854  
[judd.welliver@colliers.com](mailto:judd.welliver@colliers.com)